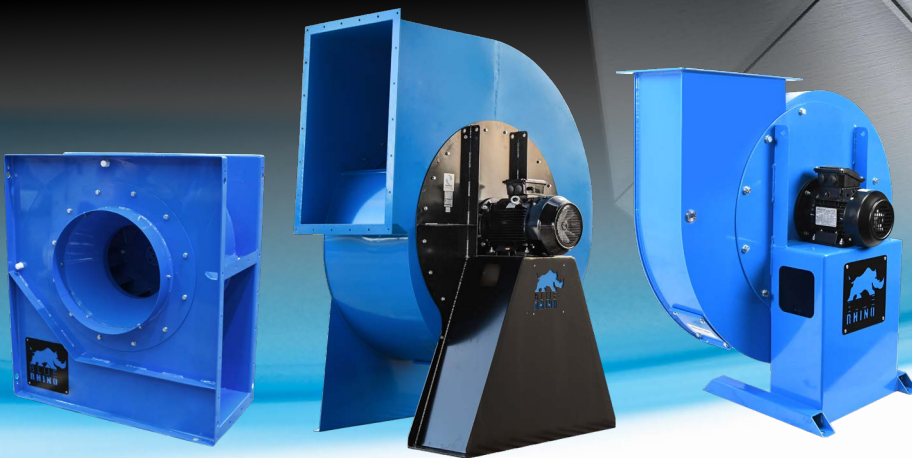




A Smarter Breed

Breed

of Centrifugal Fans



The new range of **Blue Rhino** backward-curved centrifugal fans can save time in on-site installation and commissioning, reduce service costs and provide greater reliability. They are designed to be operated by a Variable Speed Drive that eliminates the need for a high maintenance belt & pulley system.



FANTECH
Intelligent Ventilation

Optimised for peak performance.

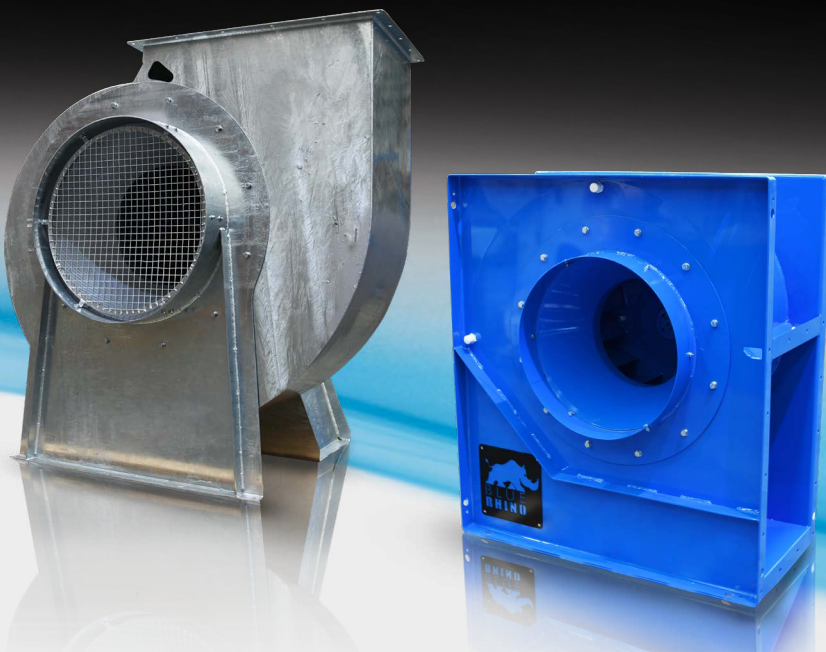
Blue Rhino single-width, single-inlet centrifugal fans include an efficient, backward-curved laminar impeller that produces powerful airflow. They feature a heavy-duty, fully welded construction that ensures reliability and a long working life. Blue Rhino's direct-drive fan can be powered by standard or high-temperature motors, making it suitable for a wide range of supply and exhaust air applications.

Engineered and manufactured by Fantech, the innovative Blue Rhino has been optimised for peak performance and enhanced efficiency. Its quality design is the result of an extensive testing and development program that has produced a range which delivers high pressure and low noise output.

Blue Rhino come in 3 ranges: BRB Box Type, BRP Pedestal Type and BRH High Pressure Type.

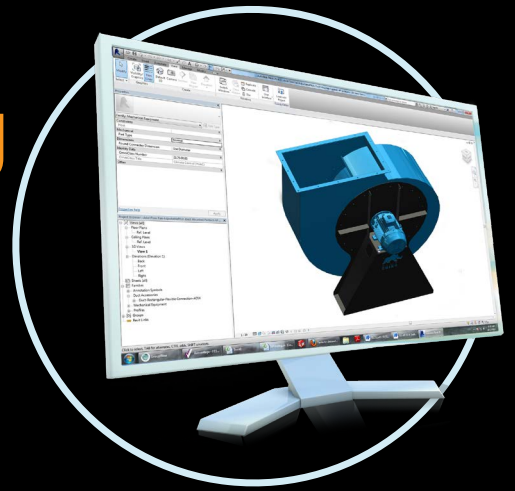
Efficient on-site installation & commissioning.

The Blue Rhino comes standard with a durable blue powder-coated finish suitable for clean and dry conditions. It is also available in a hot-dip galvanised finish, which provides protection in harsh environments, such as those near coastal areas. Blue Rhino comes factory-fitted with a number of essential features, including an inlet spigot and discharge flange, which make on-site installation quicker and easier. Inspection hatches and drain plugs are also standard inclusions, which helps to simplify service and maintenance.



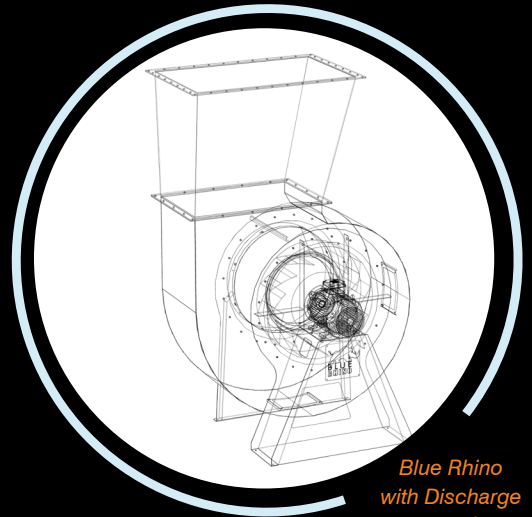
Reduced engineering and drafting costs.

Three-dimensional Revit models are available for all Blue Rhino sizes, significantly reducing project planning and drafting costs.

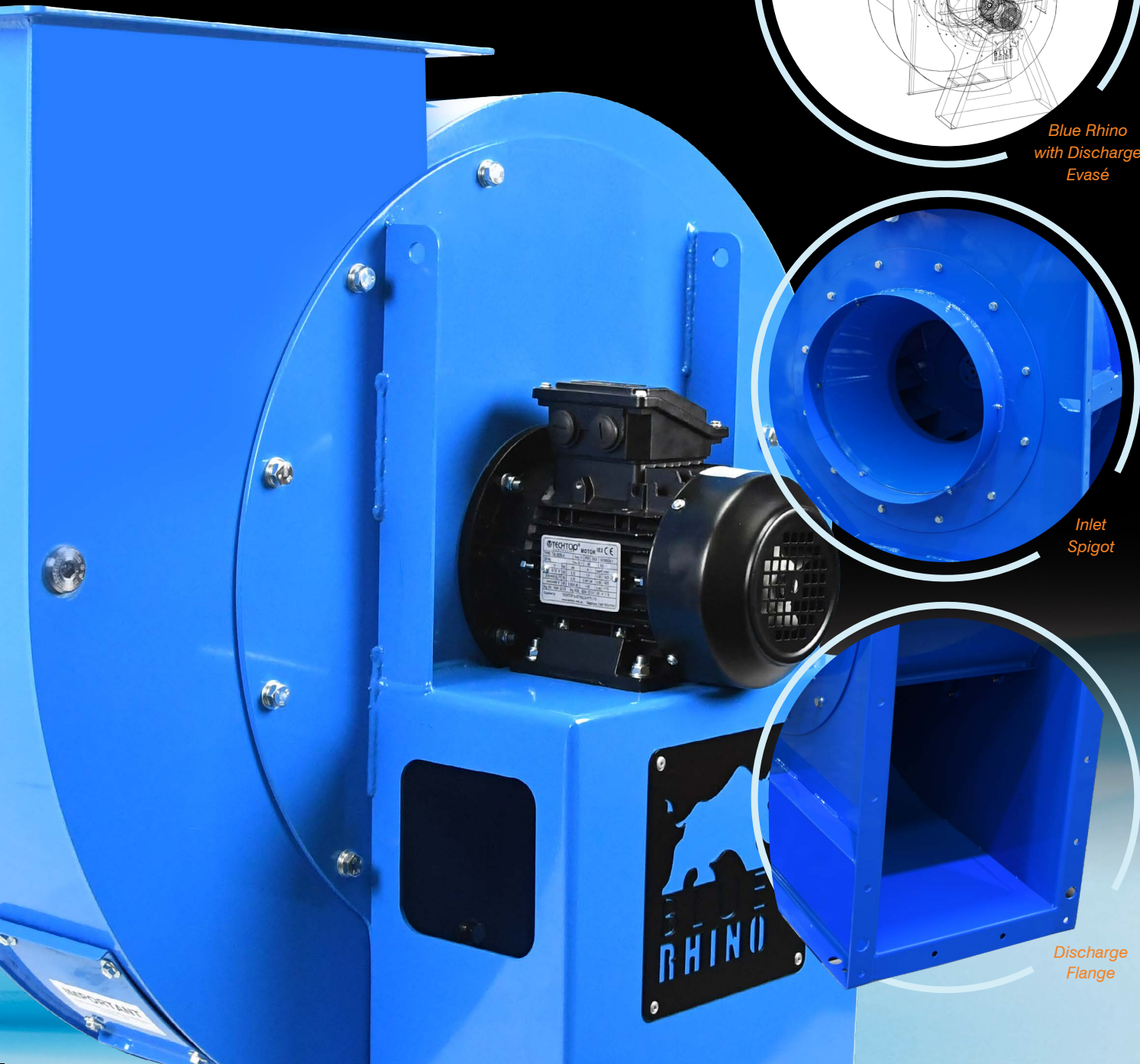


Ancillaries available.

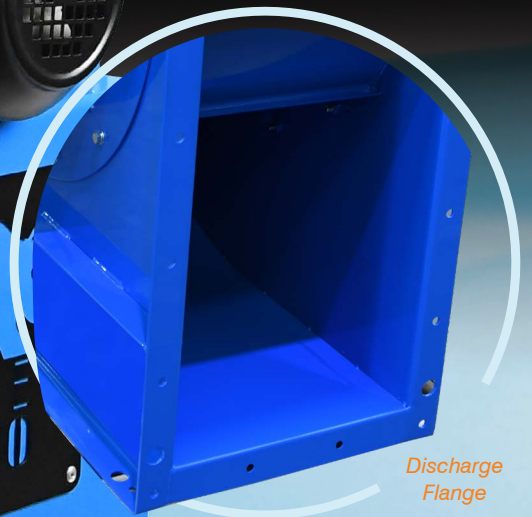
There are a number of ancillaries available including discharge easés, inlet guards and matching flanges.



Blue Rhino with Discharge Evasé



Inlet Spigot



Discharge Flange

Extensive range to suit most HVAC applications.

The versatility and features of the Blue Rhino range give contractors several advantages over standard SWSI centrifugal fans which makes them suitable for a variety of applications. The Blue Rhino typically generates higher static pressure than axial fans. Thus, these SWSI centrifugal fans are the most suitable solution for environments that require a higher pressure to flow ratio.

The Blue Rhino range offers 19 impeller sizes, ranging from 12 " (305 mm) to 44 " (1120 mm) in diameter. Each size also has several different motor capacities to maximise energy efficiency and meet the application's specified duty point.

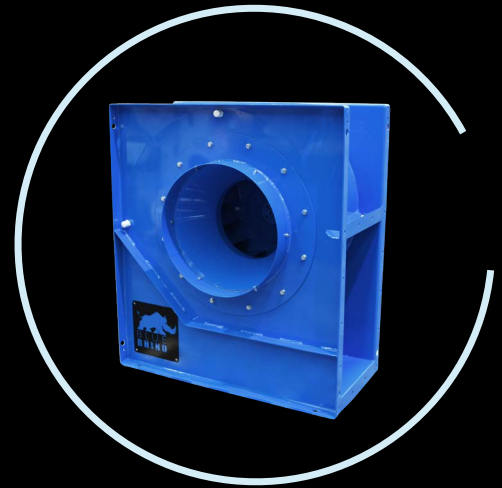
Motor sizes for each Blue Rhino have been selected to deliver the maximum operating speed of the fan. This means that for most applications the fan selected to meet the required duty point will have additional motor capacity, and this can provide more air flow if required by simply adjusting the VSD.



BRB - Box Type

The box type Blue Rhino includes a high-speed centrifugal fan in a compact and multi-directional design. It allows for mounting in any position without the requirement of a prespecified handing.

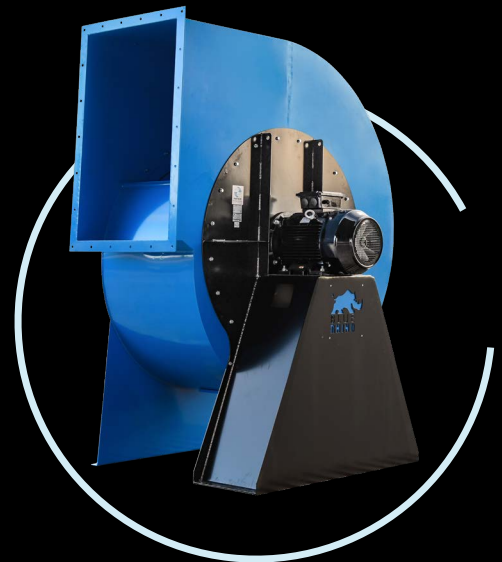
- Available in impeller diameter sizes from 12" to 30"
- Motor is mounted outside the airstream
- Comes with blue powder coating by default, or optional hot-dip galvanising
- Clockwise impeller rotation is standard, anti-clockwise rotation is available upon request
- Can be rotated on-site to 0, 90 or 180° position to suit installation requirements



BRP - Pedestal Type

The Blue Rhino SWSI pedestal type fan is suited to HVAC and industrial applications that require a large volume of clean air. These high-speed centrifugal fans are designed to meet performance and application needs while operating at maximum efficiency.

- Available in impeller diameter sizes from 27" to 44"
- Motor is mounted outside the airstream
- Comes with blue powder coating by default, or optional hot-dip galvanising
- Clockwise impeller rotation is standard, anti-clockwise rotation is available upon request
- Available 0, 90 or 180° discharge angles



BRH - High Pressure Type

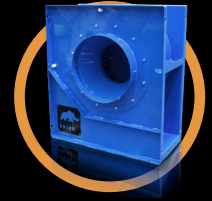
The Blue Rhino High Pressure, SWSI centrifugal fan generates higher static pressure at a reduced air volume. It is typically used for smaller and more extensive duct runs.

- Available in impeller diameters sizes from 12" to 24"
- Motor is mounted outside the airstream
- Comes with blue powder coating by default, or optional hot-dip galvanising
- Clockwise impeller rotation is standard, anti-clockwise rotation is available upon request
- Available 0, 90 or 180° discharge angles

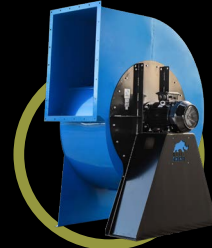


Performance Envelope Curves

The performance envelope curves provided below offer guidance for selecting the appropriate Blue Rhino fan type for a specific duty. For detailed selections, refer to the Fans by Fantech Product Selection Program or consult with one of our sales engineers.



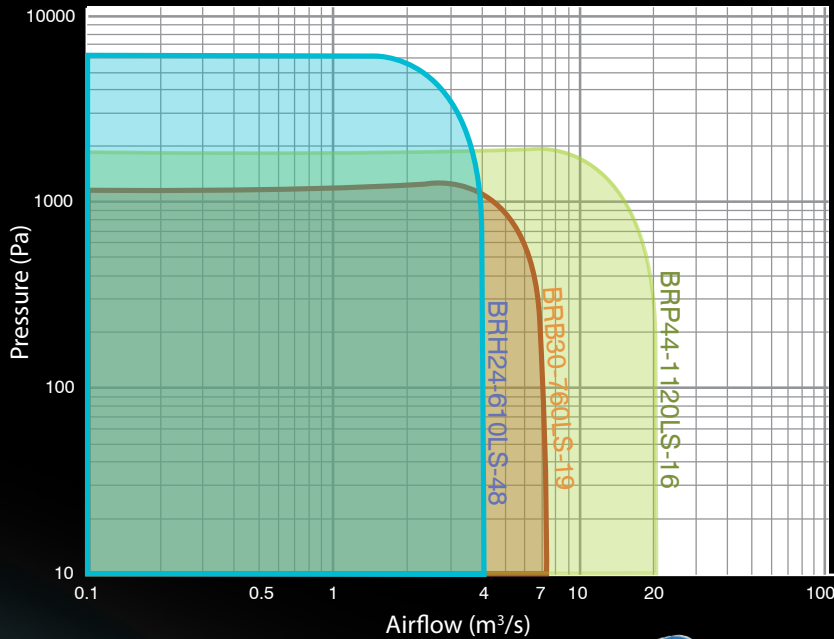
BRB30-760LS-19



BRP44-1120LS-16

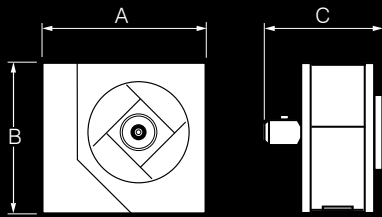


BRH24-610LS-48



Dimensional Drawings

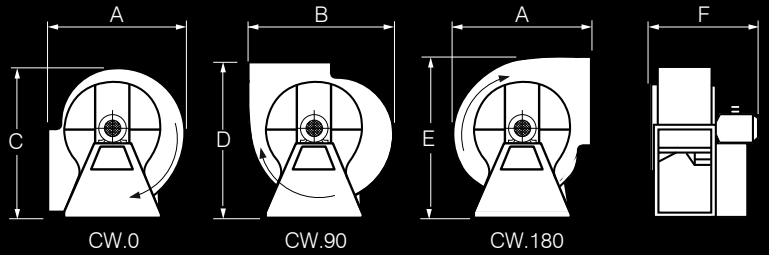
BRB - Box Type



Model Number	A	B	C	Weight (kg)
BRB12-305LS..	682	603	564	78
BRB13-330LS..	733	651	622	97
BRB14-355LS..	784	699	675	116
BRB15-380LS..	835	747	748	139
BRB16-410LS..	900	809	836	194
BRB18-460LS..	1020	908	808	198
BRB20-510LS..	1122	1004	855	250
BRB22-560LS..	1224	1100	993	295
BRB24-610LS..	1335	1196	1025	345
BRB27-680LS..	1473	1330	1143	423
BRB30-760LS..	1640	1483	1224	539

* Largest motor dimension shown Dimensions in mm

BRP - Pedestal Type

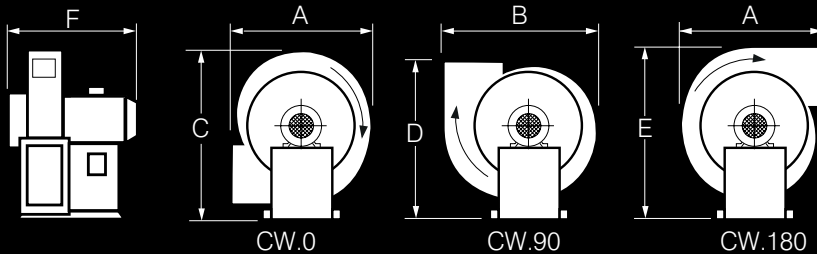


Model Number	A	B	C	D	E	F	Weight (kg)
BRP27-680LS..	1314	1435	1436	1467	1699	1175	479
BRP30-760LS..	1467	1598	1605	1639	1893	1402	684
BRP33-840LS..	1624	1776	1774	1811	2102	1462	795
BRP36-920LS..	1773	1938	1943	1983	2295	1574	949
BRP40-1020LS..	1965	2141	2139	2183	2522	1596	1027
BRP44-1120LS..	2156	2344	2345	2393	2759	1722	1249

* Largest motor dimension shown

Dimensions in mm

BRH - High Pressure Type

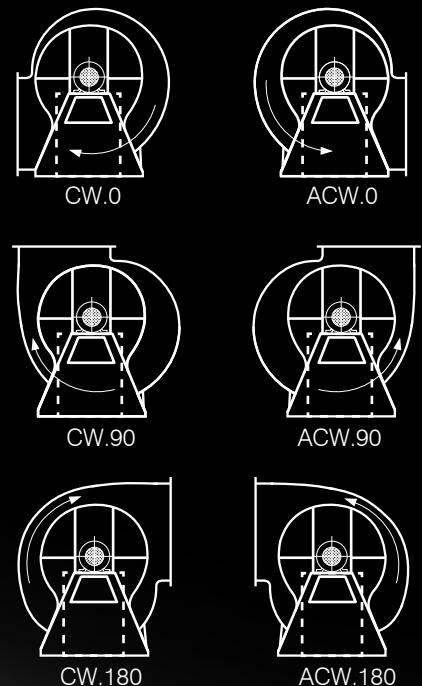


Model Number	A	B	C	D	E	F*	Weight (kg)
BRH12-305LS..	526	586	604	594	684	461	65
BRH13-330LS..	566	628	650	642	738	470	72
BRH14-355LS..	609	684	699	690	801	501	86
BRH15-380LS..	651	730	749	738	855	554	98
BRH16-410LS..	833	930	874	855	1000	630	123
BRH17-435LS..	743	828	855	844	973	626	146
BRH18-460LS..	786	874	905	893	1027	668	187
BRH19-485LS..	833	930	960	941	1086	730	211
BRH20-510LS..	869	972	1001	990	1145	756	222
BRH21-535LS..	911	1018	1050	1037	1198	836	289
BRH22-560LS..	954	1064	1100	1086	1252	848	313
BRH23-585LS..	996	1110	1150	1134	1306	854	330
BRH24-610LS..	1037	1152	1196	1183	1360	913	360

* Largest motor dimension shown

Dimensions in mm

Direction of Rotation & Discharge Position for BRP & BRH type centrifugal fans



Preprogrammed VSD for fast & efficient commissioning

The Blue Rhino fan can be equipped with a VLT Variable Speed Drive that reduces installation time, increases flexibility, and lowers maintenance and service costs. The VSD can be factory preconfigured to suit an extensive range of sensors and specific applications, transforming the Blue Rhino into an energy efficient Demand Control Ventilation system. Danfoss VLT Drives are fast and efficient to commission and feature a built-in EMC filter to remove electromagnetic interference and lower harmonic levels.

Features

- Blue Rhino fans are available with a Danfoss FC 131 or FC102 VLT HVAC drive
- Integrated Variable Speed Drive minimises installation time, provides greater flexibility and helps reduce maintenance and service costs
- VSD can be factory preconfigured to suit applications and create a Demand Control Ventilation system
- Eliminates the need for high maintenance belt and pulley system



VLT HVAC Drive FC 102

VLT HVAC Drive FC 131



Fantech Pty. Ltd.

Victoria: (+61 3) 9554 7845
New South Wales: (02) 8811 0400
South Australia: (08) 8294 0530
Northern Territory: (08) 8947 0447
Queensland: (07) 3299 9888
Western Australia: (08) 9209 4999
A.C.T.: (02) 6280 5511
New Zealand: (09) 444 6266

www.fantech.com.au | [Twitter](#) | [LinkedIn](#) | [Facebook](#) | [YouTube](#)

For sales enquiries contact:

Specifications and design subject to change without notice.

06/09/2023